

# Monta Vista Office Plaza

617 N 17th St, Colorado Springs

Prime Westside Office Space For Lease



# HIGHLIGHTS

- 1,800 SF Available
- \$13.00/SF Gross + Utilities
- 2 Minutes to I-25
- 5 Minutes to Downtown and Old Colorado City
- Proximate to Uintah Gardens Shopping Center, Westside Shopping Center And Other Retail Amenities
- Unobstructed Mountain Views
- Highly Visible Monument Signage



Suite	Square Feet	Rent Per SF (Annual)	Lease Type
300	1,800	\$13	Gross + Utilities

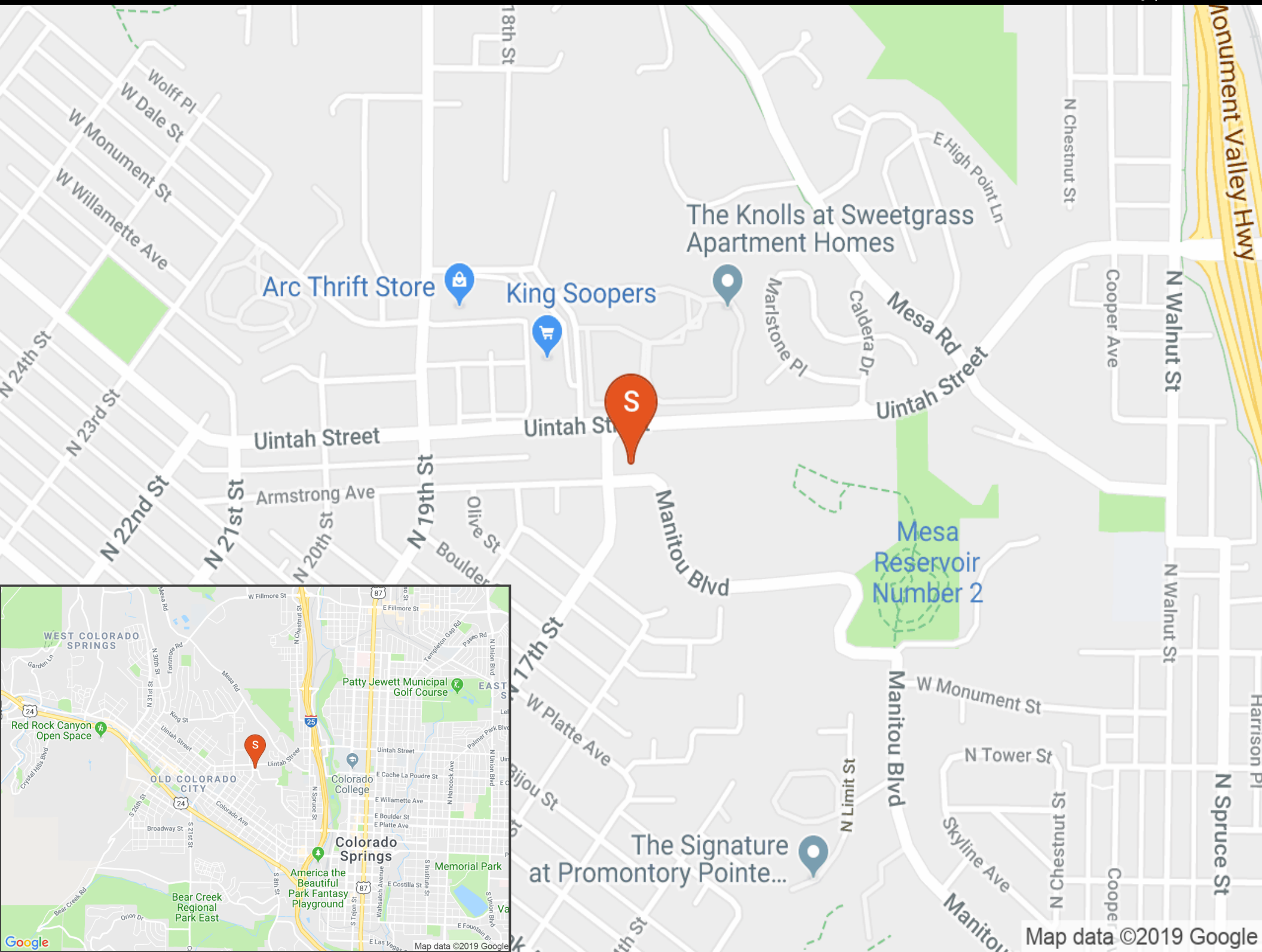
*Exclusively Marketed by:*

**Russell Stroud, CCIM**  
 Senior Broker  
 719.228.3619  
 rstroud@quantumcommercial.com

**Mary Frances Cowan, CCIM**  
 Senior Broker  
 719.228.3606  
 mcowan@quantumcommercial.com





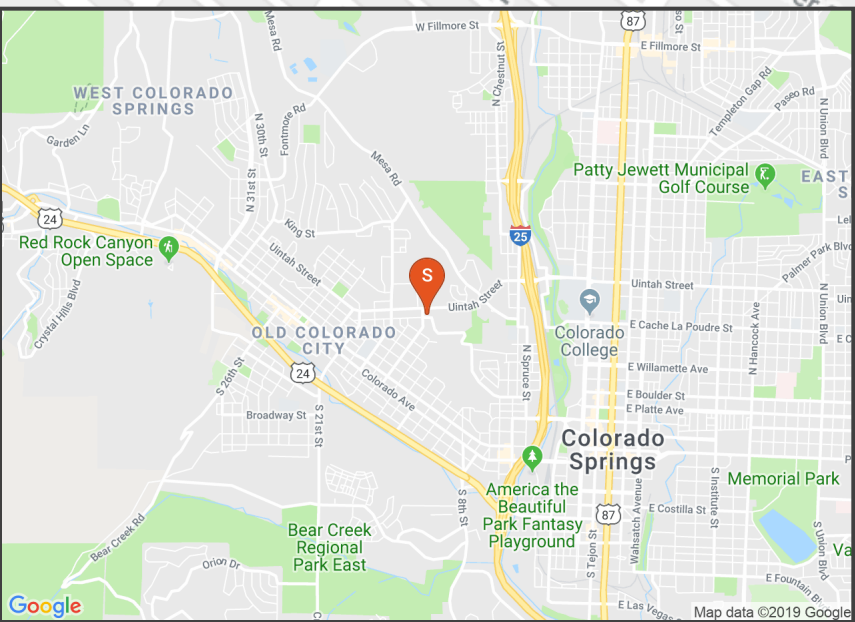


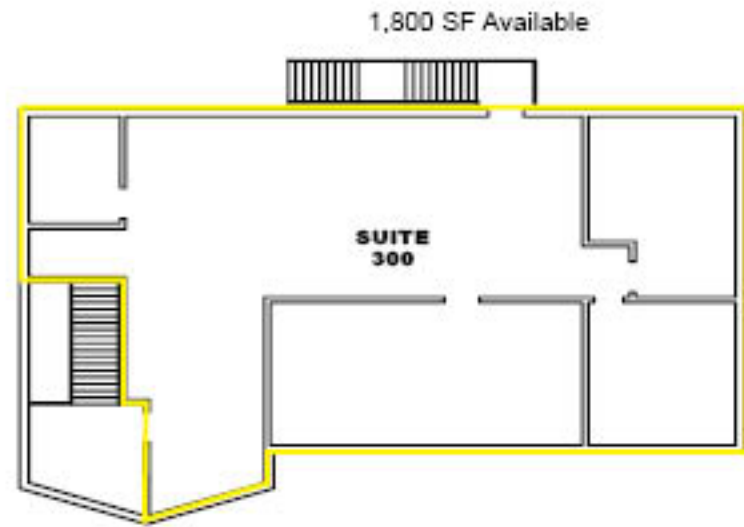
The Knolls at Sweetgrass  
Apartment Homes

Arc Thrift Store King Soopers

Mesa  
Reservoir  
Number 2

The Signature  
at Promontory Pointe...





# 3RD FLOOR