

FOR LEASE

2285 BUSCH AVENUE 80904

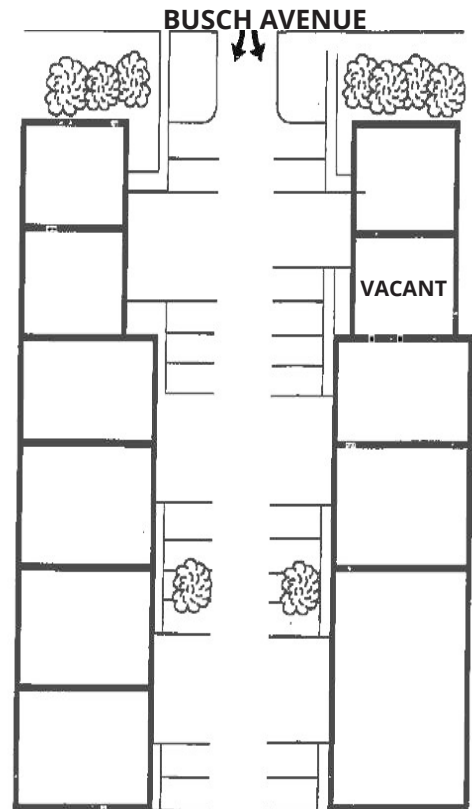
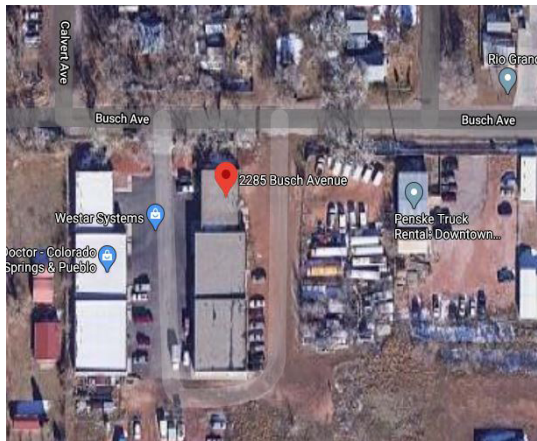
Westside Industrial Office / Warehouse

1,250 Sq.Ft. Unit Available

Vacant June 1, 2020

WEST NEST INDUSTRIAL PARK

The well located property is just off 21st street on the west side of Colorado Springs and only minutes from I-25. 16' ceilings, overhead ground level doors, parking, M1 zoning and fenced outside storage make this building a great location for any user in the immediate need of industrial warehouse and office space. The property is professionally managed and maintained on a regular schedule.



- City Zoned M1
- 16' High Ceilings, 6" Concrete Floors, Block Wall Construction, Forced Air Gas Heat
- 10' x 10' Overhead Door
- Contains an A/C Unit
- Paved Parking
- Easy Access
- \$1,050 Per Month Gross (does not include utilities, trash pickup, storm water fee or common utilities).

Jerry Knauf

Commercial Real Estate Advisor

719.228.3617

jknauf@quantumcommercial.com

The information contained herein was obtained from sources believed to be reliable, however, Quantum Commercial Group Inc makes no guarantees, warranties, or representations as to the completeness or accuracy thereof. The presentation of this property is submitted subject to errors, changes of price or conditions prior to sale or lease, or withdrawal without notice.

101 N Cascade Avenue, Suite 200 | Colorado Springs, CO 80903
719.590.1717 main | 719.634.0404 fax | quantumcommercial.com

