

# LAND FOR SALE

## 4025 CR 88, Cripple Creek, CO 80813

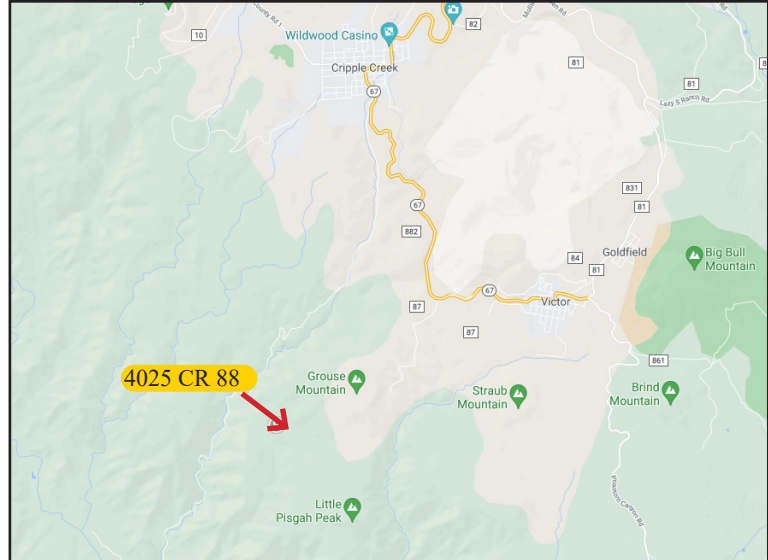


● Indicates owned by Bureau of Land Management

### PROPERTY INFORMATION

Parcel #: 10175.55030010  
Area: 10.83 Acres  
Zoning: A-1  
Price: Contact Broker

*Buyer is responsible for conducting its own investigations of the property and its potential uses. No representations are made by Quantum Commercial Group.*



RUSSELL STROUD, CCIM  
Senior Broker  
719.228.3619  
rstroud@quantumcommercial.com

MARY FRANCES COWAN, CCIM  
Senior Broker  
719.228.3606  
mcowan@quantumcommercial.com

 **Quantum**  
Commercial Group Inc

The information contained herein was obtained from sources believed to be reliable, however, Quantum Commercial Group Inc makes no guarantees, warranties, or representations as to the completeness or accuracy thereof. The presentation of this property is submitted subject to errors, changes of price or conditions prior to sale or lease, or withdrawal without notice.