

# PAD SITES AVAILABLE FOR SALE

## INTERQUEST TOWN CENTER

10833-10859 & 10937 New Allegiance Dr.  
Colorado Springs, Colorado 80921

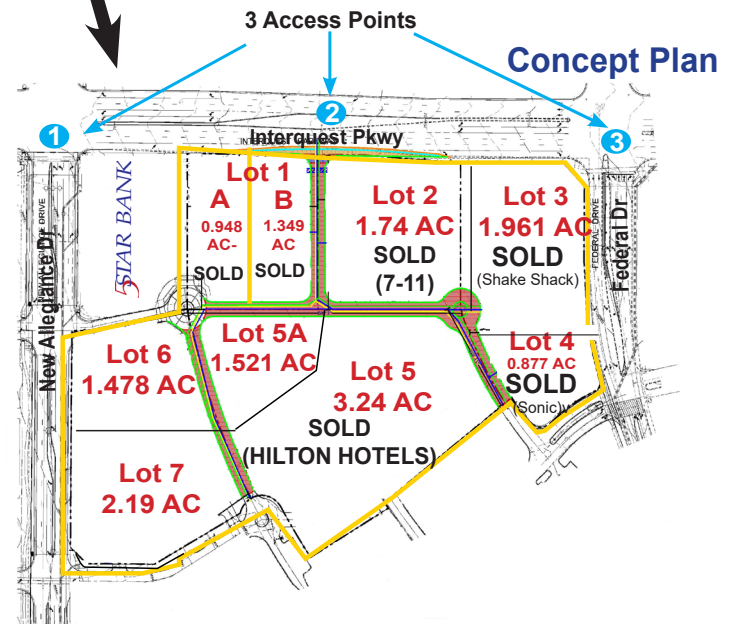


### Property Features

City/County	Colorado Springs/El Paso
Pad Site Sizes	Varies from 0.877 AC to 2.3 AC
Zoning	PUD (Planned Unit Development)

## ± 5.189 Acres of Pad Sites For Sale

The InterQuest Town Center, 19.523 total acres, is located in InterQuest Development, a mixed-use park of office, retail, lodging, entertainment and living. Situated on the southwest corner of InterQuest Parkway and Federal Drive, the site enjoys significant frontage along InterQuest Parkway and access from both the east and west from Federal Drive and New Allegiance Drive, respectively. Unparalleled freeway access via the I-25/Interquest Parkway interchange, exit 153, and unobstructed mountain views round out the site's ideal location. There are also three separate access roads to and from Interquest Parkway into the site. A broad range of uses are allowed on this parcel including office, medical, retail, food sales and restaurants, certain automotive, daycare and schools. Senior living, apartments and townhomes are also permitted uses.



\*UC = Under Contract

MICHAEL PALMER, SIOR  
Senior Broker, Office & Investment  
719.228.3626  
mpalmer@quantumcommercial.com

PAUL PALMER  
Senior Broker, Office & Investment  
719.228.3629  
ppalmer@quantumcommercial.com



The information contained herein was obtained from sources believed to be reliable, however, Quantum Commercial Group Inc makes no guarantees, warranties, or representations as to the completeness or accuracy thereof. The presentation of this property is submitted subject to errors, changes of price or conditions prior to sale or lease, or withdrawal without notice.



# PAD SITES AVAILABLE FOR SALE

## INTERQUEST TOWN CENTER

10833-10859 & 10937 New Allegiance Dr.  
Colorado Springs, Colorado 80921



### PROPERTY FEATURES

Pad Sites Available:	1.478 to 2.19 AC
Sale Pricing:	\$35.00 to \$38.00 PSF
Pad Site Land Leases:	Available - Call to discuss
Zoning:	PUD (Planned Unit Development) Commercial, retail, office, multi-family, mini storage sites, etc. available.
Interquest Parkway Access:	There are three access points from Interquest Parkway into and out of the site.

MICHAEL PALMER, SIOR  
Office & Investment  
719.228.3626  
mpalmer@quantumcommercial.com

PAUL PALMER  
Office & Investment  
719.228.3629  
ppalmer@quantumcommercial.com

### DEMOGRAPHICS

2019	1 MILE	3 MILE	5 MILE
2019 Population	425	35,562	110,274
Avg HH Income	\$120,830	\$133,155	\$117,686
Median HH Income	\$102,500	\$113,934	\$99,051
No. of Households	173	12,938	38,530

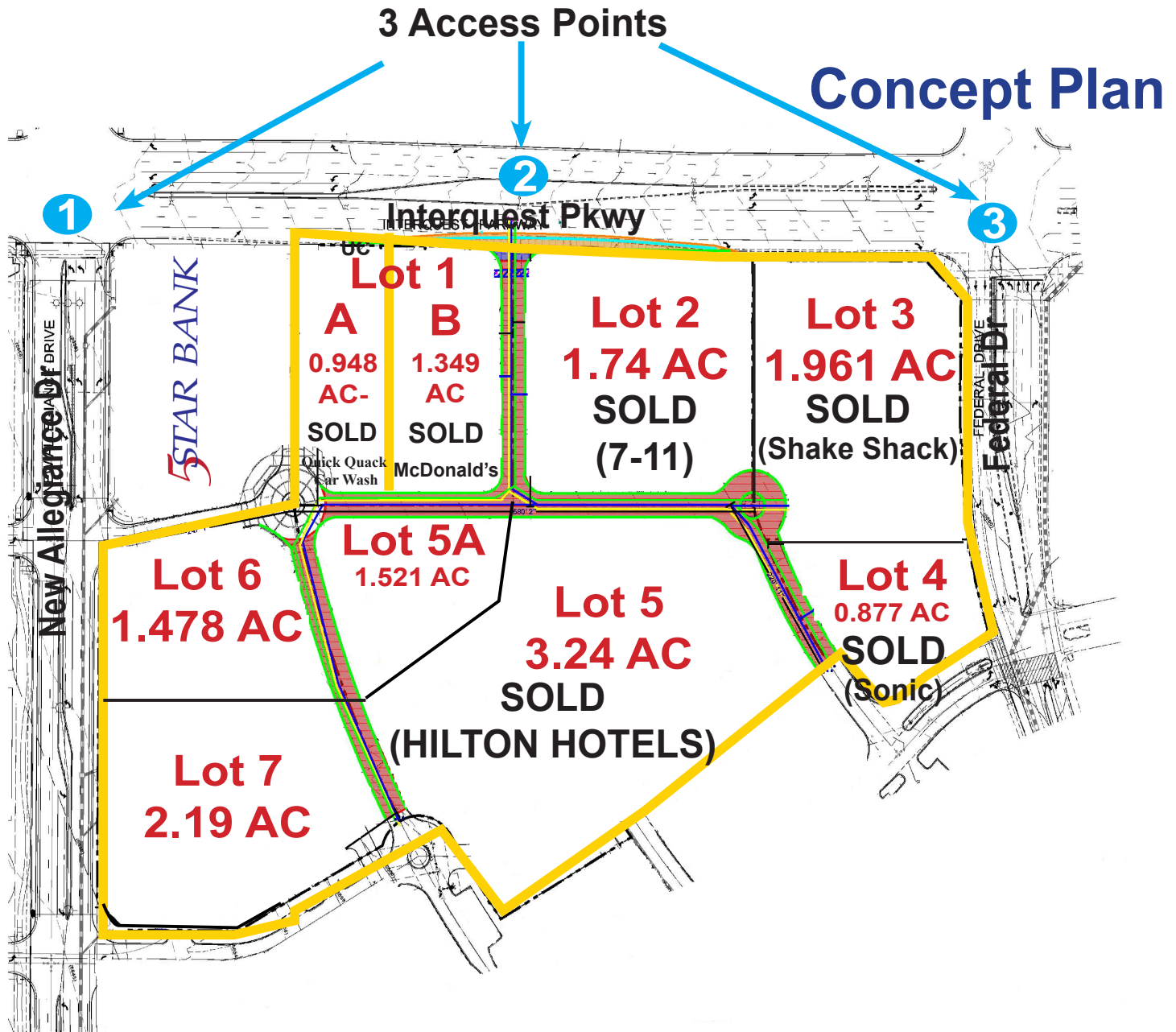
### PAD SITE PRICING TABLE

Lot 1 A & B	2.297 AC	Sold
Lot 2	1.74 AC	Sold
Lot 3	1.961 AC	Sold
Lot 4	0.877 AC	Sold
Lot 5 & 5A	3.24 (Sold) & 1.521 AC	\$35-38 PSF
Lot 6	1.478 AC	\$35-38 PSF
Lot 7	2.19 AC	\$35-38 PSF

# PAD SITES AVAILABLE FOR SALE

## INTERQUEST TOWN CENTER

10833-10859 & 10937 New Allegiance Dr.  
Colorado Springs, Colorado 80921



**\*UC = Under Contract**

MICHAEL PALMER, SIOR  
Office & Investment  
719.228.3626  
mpalmer@quantumcommercial.com

PAUL PALMER  
Office & Investment  
719.228.3629  
ppalmer@quantumcommercial.com