

# Office For Lease

3650 Rebecca Lane, Colorado Springs, CO 80917



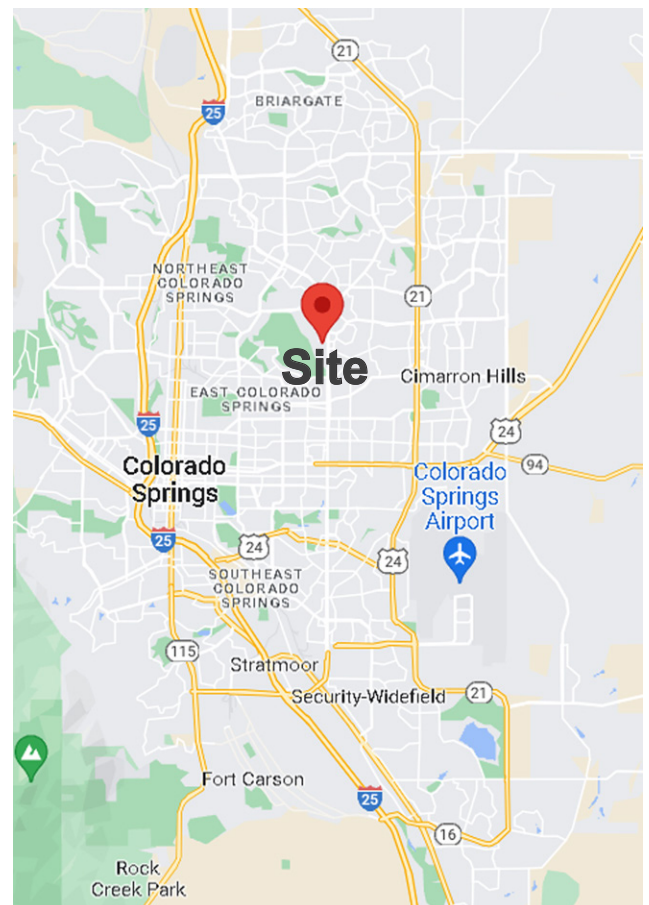
## Medical & Professional Office Space Available

### PROPERTY HIGHLIGHTS

**Building Size:** 8,648 SF  
**Zoning:** C-5, P  
**Available Space:** Single office to 3,500 SF  
**Year Built:** 2004  
**Parking:** 4.7/1,000 - 41 total spaces  
**Lease Rate:** See floor plan

- Well-maintained Class B two (2) story professional office building
- Centrally located close to the intersection of North Academy Boulevard & North Carefree Circle
- Ample on-site parking available
- Elevator access
- Flexible units
- Grand atrium entrance/common area
- Conference areas
- Kitchen/break room areas

**ANDREW OYLER**  
Office & Investment  
719.228.3605  
aoyler@quantumcommercial.com





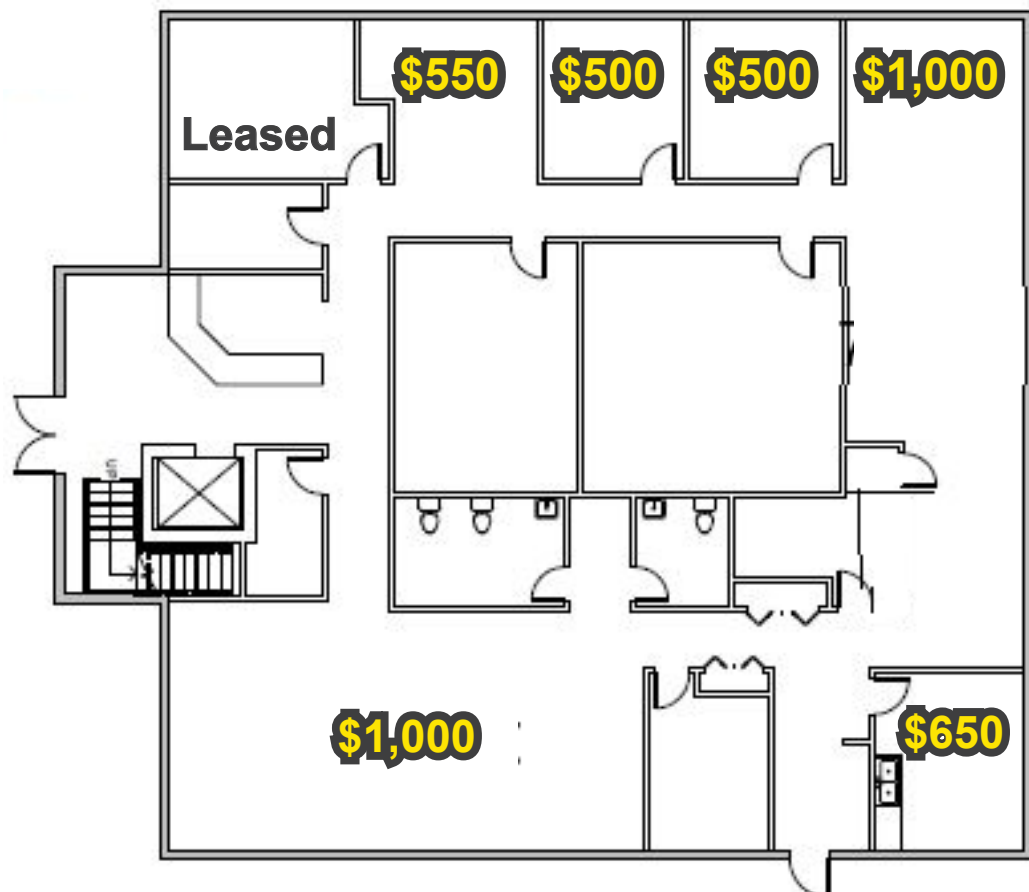
# Office For Lease

3650 Rebecca Lane, Colorado Springs, CO 80917



## Floor Plan Lower Level 4,324 SF

Note: These prices are monthly base rent rates. Tenant may lease one office or a combination of offices.



The information contained herein was obtained from sources believed to be reliable, however, Quantum Commercial Group Inc makes no guarantees, warranties, or representations as to the completeness or accuracy thereof. The presentation of this property is submitted subject to errors, changes of price or conditions prior to sale or lease, or withdrawal without notice.